

# Pet Tracker 227PA User Guide

## 1 INTRODUCTION

The Pet Tracker 227PA consists of one remote unit for the owner and transmitter tag that easily attach onto your pets collars via a specially designed water splash proof silicone case. In case of your beloved pets wander off or hide somewhere, the Pet Tracker can help to track them down. The locating range is up to 1600 feet / 500 meters of Line-of-Sight open field. [Search Demo Video "Pet Tracker 227PA" from YouTube](#)

### KEY FEATURES

- Helps you track down up to 4 pets should they go missing
- Directional tracking to guide you in the right direction
- Uses safe 2.4 GHz RF technology, coexistence with other wireless devices
- Water splash resistant case for outdoor activities
- Smart sleep mode for longer battery life of up to two months
- Easily attaches to most collars including a Velcro strap for larger collars
- Special Data Encryption so you won't detect other pets
- Rhythm Buzzer- the closer you are to your pet, the faster the rhythm is
- Track by sound, tag beeps to help you zero in their hidden location
- Easy installation, insert battery, turn on, and you are good to go
- Multi purpose: It can be used on pets, keys, bags, and even for the kids

### SPECIFICATIONS

Function	Searching & Tracking 1 to 4 Tags	
Search range	0~500 meters (*Distance will vary depending on terrain and other factors)	
Communication Standard	Digital 2.4 GHz RF (Frequency range: 2.40 - 2.48MHz)	
Remote / Tag unit specs	Remote unit	Tag unit
Battery type	AAA x 2	CR2032x1 or LIR2032
Battery life time with search (10 mins a day)	150 days	CR2032: 60 days LIR2032: 30 days
Beep Sound (at 10cm/3.9inch)	95db ± 3 db	85db ± 3 db
Dimension (L/W/H) in mm	95x65x14mm	38x25x11 mm
Working environment	With CR2032 Battery: Temp. 5°C~40°C · humi. 20%~80% With LIR2032 Battery: Temp. -15°C~40°C · humi. 20%~80%	

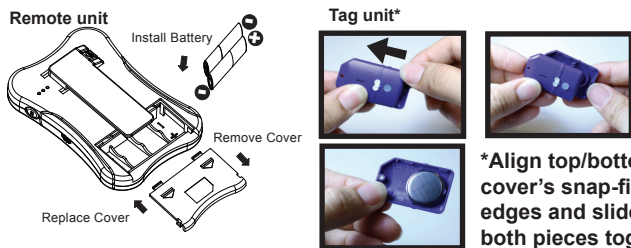
Page 1

## 2 GETTING STARTED (example for 227PA2, 1 Remote to 2 Tags)

This section shows how to setup your Pet Tracker and do the initial calibration process.

### BATTERY FITTING

1. Insert the batteries into the Remote unit and the available Tag units.
  - Slide out (remove) the battery covers on the Remote and Tag Units.
  - Insert batteries (included) according to the polarity markings (+/-) in the battery compartments.
  - Replace the battery compartment covers on both units.
2. Tag unit will flash for 30 seconds and enter sleep mode.



**TESTING** - need at least one meter search distance between Remote and Tag.

1. Place the White Tag unit in a stationary location.
2. With the Remote base unit in hand, walk away from the Tag. At about 20~30 meters outside turn ON the Remote.
3. Once the remote base unit is turned on to start search the White Tag, this will enable a green flash and initiate a slow tracking rhythm.
4. Now start walking back towards the tag, you should hear a increased rhythm and get max signal rhythm when within 10~15 meters of the tag.
5. Press and hold the button "1" to activate the tag to chirp to allow tracking by sound. Once the search is done, turn off the remote.
6. Place the Tag into the silicone case and attach the case onto your pet's collar. If the collar is too wide to fit into the silicone case vents, please use the provided velcro strap and fit the case onto the strap.
7. To test the second Tag (Black), just do the same steps as select button "2" after turning on the Remote unit.

**Note:** You may turn the remote base unit off when not in use to save battery. Turn back on when searching is required.

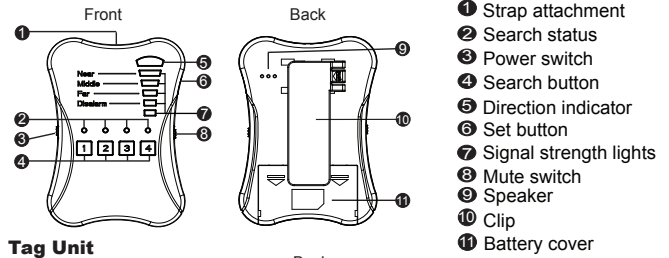
Page 3

### PACKAGE CONTENTS (227PA2)

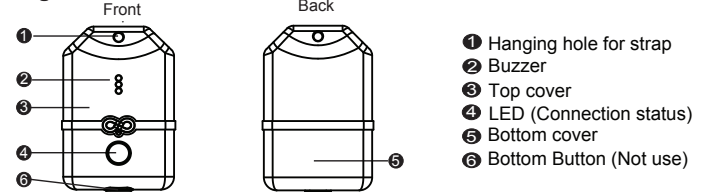
Model Name	Base Unit	Tag Unit (base on purchased model)
Remote Unit	1 piece	
Tag Unit		2 pieces
Batteries	AAA x 2 pieces	CR2032 x 2 pieces
Strap	1 piece	
Hook	1 piece	
Silicon Sleeve		2 pieces
Velcro strap		2 pieces
User manual	1 piece	

### OVERVIEW

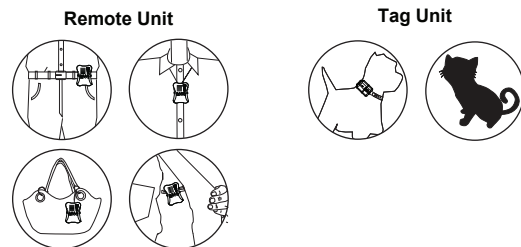
#### Remote Unit



#### Tag Unit



### SUGGESTED LOCATION TO PLACE BASE / TAG units



Page 2

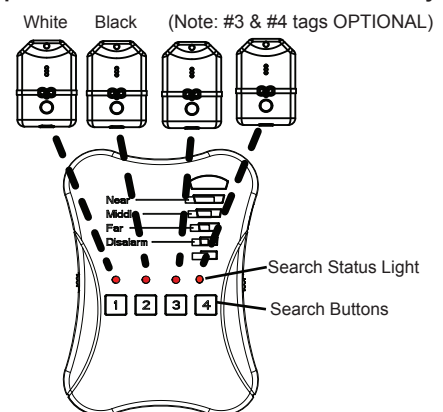
### IMPORTANT SCAN AND SEARCH NOTES FOR "OUT OF RANGE"

1. Each 'Scan Session' only last one minute. If Remote can not find each tag within time period, the Remote will go to sleep mode. Please press the search button no.(1,2,3 or 4) once to enter the search mode again, as you walk and search the area for a signal.
2. When Remote is connected with tag, it can last 3 minutes. If you are in wrong direction, please try other direction again. When the tag is within the range, the remote base unit will show a green LED and start a tracking tone within 30 seconds (Tag is in sleep mode, Remote will wake up tag and synchronize). Follow green Indicator direction then listens to beeping frequency. When the more Red LED Indicators show, you are walking in the right direction. DO NOT turn in circles on the same spot, keep walking in different directions and follow Green LED. When you hear beeping and speeds up sound effect, you are near the tag now.

### MANAGING ALL 4 TAG UNITS FROM THE BASE UNIT

The Remote Unit will always start searching for Tag 1 (White tag) when it is turned on. To search for the second Tag (black) press button "2" and the Remote Unit will start searching for the second Tag while button 3 and 4 are for the third and fourth. If the Tag you are searching for isn't in range the status light will flash continuously with no signal or tracking tone. One minute later, the Remote Unit will beep and go to sleep mode, you can press the search button to renew your search.

\*\*\*When not use, please turn off Remote Unit to save battery life.\*\*\*

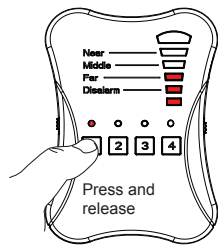


Page 4

### 3 How to search for your missing pet or tag

When your pet is missing, you can start tracking your pet with the Remote Unit within up to 500 meters in an open area like a large property, or park. (Distance may vary)

1. On the Remote Unit, press the "Search" button once to search for the missing pet or tag. The Rhythm and signal strength indicators will initiate. When going the right direction the Remote will increase in rhythm and signal strength.



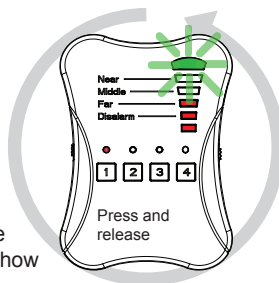
**Important: Before you start searching, you must follow the steps below to search your Pet Tracker 227PA! The Remote need collect RF signal data and analyze it.**

2. For each search session, you have to collect the current environment's data. Press the search button, hold Remote at chest level, and scan the area slowly in a circular direction, from right to left for 360° and again from left to right (one 360° turn = 3~4 seconds).



**Note:** If the "Direction Indicator" illuminates green on the Remote Unit during this calibration process, it does not yet indicate a Tag Unit's direction.

4. Next, slowly scan a third time from left to right. The "Direction Indicator" on the Remote Unit will illuminate (green) when it establishes the direction of the Tag location.



**Note:** Be calm! The initial synchronization time is about 15 - 30 seconds for Remote Unit and each searching Tag. Please follow the above steps to get the best tracking accuracy, as it may affect how fast to find your pet or not.

Page 5

### 4 Low Battery Alerts

1. When the Remote Unit's battery is low, the first indicator light at the bottom will flash continuously while giving a low beeping tone.
2. When the Tag Unit's battery is low, the LED will flash once every second when it's connected to the Remote Unit and will beep a few times every twenty seconds.

**Note:** If you run your units on low batteries, operations may become unpredictable or results may become inaccurate.

### 5 REMOTE UNIT and TAG UNIT PAIRING

The Remote and each of the Tag Units are "Paired" before shipment - that is, each Remote to Tag combination must have its own unique communication handshake, so that the Remote does not get confused between the Tag Units. The procedures below are used to re-establish the "Pairing". When Tag Unit is replaced or a Tag Unit cannot communicate with the Remote. For this example we "Pair" the Remote unit to Tag #2 (black) - follow the instructions below:

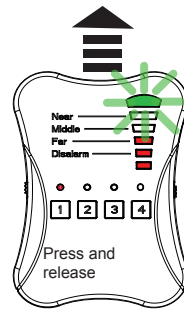
1. Make sure the Remote Unit and ALL the Tag Units are turned off.
2. To enter "Registration" mode, hold down the "Set" button (on side of the Remote unit) and the "Search" button for Tag #2 on the Remote Unit and then, at the same time, turn on the Remote Unit - as soon as the red light above the "Search" button (for Tag #2) flashes **exactly twice**, release the buttons (if you've already reached the 3rd flash, you have to start again).  
If you've entered the "Registration" mode successfully, the light above "Search" button and the light below the "Dis-alarm" light on the Remote Unit will flash together.
3. Finally, bring Tag #2 to within 10 cm (4 inches) of the Remote Unit and turn it on. The Tag Unit will chirp twice, indicating a successful "Pairing".
4. **Pairing tag is a sequential process: If you re-pair #1 tag, you have to re-pair any tags after that tag. You can not just replace and repair one tag in between tags.**

Rev 01212017

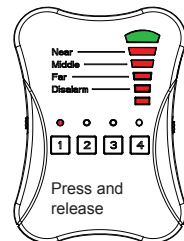
Page 7

### SEARCHING FOR YOUR LOST PET (continued)

5. Start moving at the directions where you think your pet may have wandered off to. If a certain direction triggers the green LED and starts increasing rhythm and signal that means you are going the right way. If you are walking the wrong way or direction the green LED will likely stay off while the signal indicator and rhythm will decrease. If signal decreases, immediately turn and walk the other direction or opposite way. If your pet is moving around you may have to keep trying different directions.



6. If you get close to within 15~25 meters the signal strength and rhythm will go on full via having all LED lights lit up. The Direction Green LED indicator may become inaccurate at this stage due to the strong strength, but you should have sight of your pet by now. If not, press and hold to activate the Tag to chirp to allow tracking by sound.



7. Once the Tag Unit is found, turn off the Remote Unit to stop searching

### SILENT SEARCH

In quiet areas (e.g. libraries), it is possible to conduct a silent search, where both the Remote and Tag Units are muted. To do this simply, turn on the "Mute" button on the Remote Unit before turning on. Afterwards, just use the signal strength indicator to search.

### MUTE MODE (on the Remote Unit)

The "Mute" button on the side of the Remote Unit can be switched on at any time to silence the Remote Unit to avoid distraction in quiet areas (e.g. libraries).

### FAQ:

1. Why Remote can not find the Tag next to it?  
Ans: Remote and Tag need to have one meter distance for search to work.
2. Battery life issue? Ans: Scan / Search and alert sound use most of battery energy. The standard useage is based on 10 minutes per day.

Page 6

FAQ 3: Remote and Tag reconnect question?

Ans: Sometime (very rarely) tag unit can go to deep sleep. You can remove battery and insert back to wake up the tag unit.

### 6 Warnings and Important Information

1. The Tag Units are water-repellent, but not waterproof! Keep the device dry. Precipitation, humidity, and all types of liquids or moisture can contain minerals that may corrode electronic circuits. If your unit gets wet, remove the battery, and allow the unit to dry completely before replacing it.
2. If you want to use the device during air flight, please comply with the air safety regulations for each respective country.
3. We reserve the right to change the hardware/software specifications and designs, as well as the information in the manuals, at any time without prior notice.
4. Proper operating temperatures for this product are between 40°F ~ 104°F (5°C ~ 32°C). Proper storage Temperatures are between -4°F ~ 185°F (-20°C ~ 85°C). For operating temperatures under 40°F (5°C) please use LIR2032 batteries only - Ask your Pet Tracker agent.
6. The batteries provided in this product should be disposed of properly according to national or regional recycling regulations - contact local authorities for more information.

**Warning: Do not expose the batteries to fire or heat - this may result in danger from explosions.**

#### Federal Communication Commission Interference Statement

This equipment has been tested and improved to comply with the limits of a Class B digital device, pursuant to Part 15 of the FCC Rules. These limits are designed to provide reasonable protection against harmful interference in a residential installation. This FCC Certifications equipment generates, uses and can radiate radio frequency energy, if installed and used not in accordance with the instructions, may cause harmful interference to radio communications. However, there is no guarantee that interference will not occur in a particular installation. If this equipment does cause harmful interference to radio or television reception, which can be determined by turning the equipment off and on, the user is encouraged to try to correct the interference by one of the following measures:

- Reorient or relocate the receiving antenna.
- Increase the separation between the equipment and receiver.
- Connect the equipment into an outlet on a circuit different from that to which the receiver is connected.
- Consult the dealer or an experienced radio/TV technician for help.

This device complies with Part 15 of the FCC Rules. Operation is subject to the following two conditions:

- (1) This device may not cause harmful interference, and
- (2) This device must accept an interference received, including interference that may cause undesired operation.

**FCC Caution:** Any changes or modifications are not expressly approved by the party responsible for compliance which could void the user's authority to operate this equipment.

#### EU / RCM Declaration Conformity

This product is carrying the RCM and CE-Mark in accordance with the related European / Australia / New Zealand Directives.



Page 8