

Charm Tag Quick Installation Guide For iOS

1 Download App

- On your iOS smartphone running iOS 6 and above, iPad version 3/4 operating iOS 6 and above. iPad mini all versions, operating iOS 6 and above. iPad air and iPod Touch (version 4 operating iOS 6 and above). Download the free **iStuffFinder** App is illustrated in Figure 1 from the iTunes App store. **Apps for iPhone or Safari.**
- Enable on your iOS device as illustrated in Figure 2.

Notice: For iOS devices, 4 Charm Tags can be detected at once.



Figure 1

Figure 2

Airplane Mode

Charm Tag is a device used by most people when travelling and can quickly and efficiently be temporarily disabled by simple enabling airplane Mode" on your mobile device. At this time, **ALL** connected tags will emit an audible alarm, then enter a "sleep condition" and will stop transmitting. Each tag will only reawaken, when "airplane mode" on your mobile device is disabled. **Please note:** On disabling airplane mode, it may take up to 1 minute for each tag to reconnect.

2 Install the battery and pairing

- Place the battery into **Charm Tag** as illustrated below.
- Remove the top cover with your hand. Force the top cover to slide from its mounted position towards the top of the Charm Tag. (Figure 3 & Figure 4)
 - Insert the battery into the battery compartment with the "+" sign on the battery facing up. Then replace the top cover by sliding it down into compartment opening. (Figure 5)
 - Once turn "ON" the Charm tag will automatically enter "pairing" mode and the LED will flash GREEN once every second indicating it is searching for your ios device.



Figure 3

Figure 4

Figure 5

- Run the **iStuffFinder** Application on your iOS device by tapping the **iStuffFinder** icon, then tap the search button **Q**. (See figure 6) to discover all available devices.
- The App will then present you with a pairing request (See figure 7) and Select "Pair" for each device (Up to a maximum of four) The device will then enter paired (connected) mode and the green LED will blink once every 5 seconds.

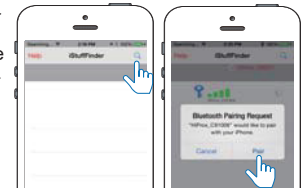


Figure 6

Figure 7

3 Locate your iPhone/iPad or Charm Tag

To simply test the paired device and to Locate your iPhone/iPad
Press and immediately release the "Find Me" button as illustrated in Figure 8. Your iOS device will emit an audible signal for approximately 5 seconds.

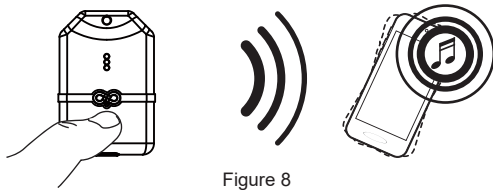


Figure 8

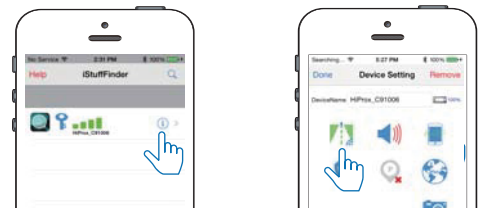
To locate your valuables attached to the Charm Tag
Tap the **Q** button (as illustrated in Figure 9), the Charm Tag will emit a beeping sound and then continue to beep for approximately 5 seconds.



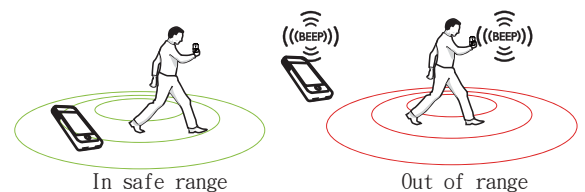
Figure 9

4 Notification alert when your iPhone/iPad and Charm Tag are out of range

Alarm Sensitivity Settings (The default setting is in far or low sensitivity)
To select the distance at which your iOS device and Charm Tag are out of range tap the **i** icon to the right of each paired device list. On tapping it, the images to the left will appear. **Green** Far / low sensitivity, **Red** Near / High sensitivity, **Grey** Off or no sensitivity.



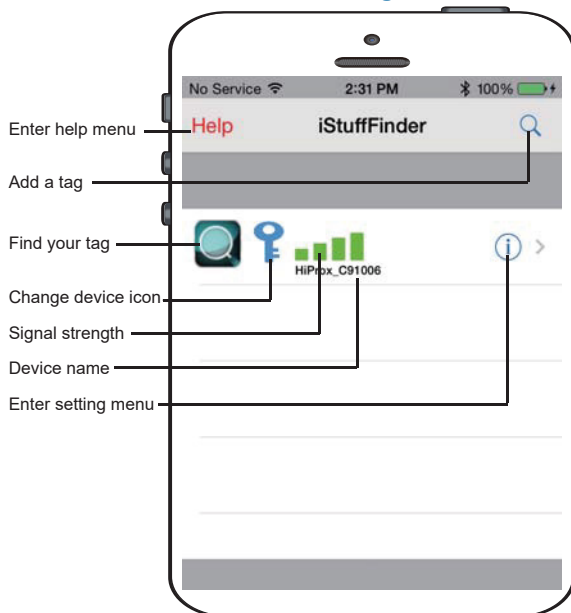
When the item tagged is beyond the set range, both the Charm Tag and your iOS device will emit an audible tone.



In safe range

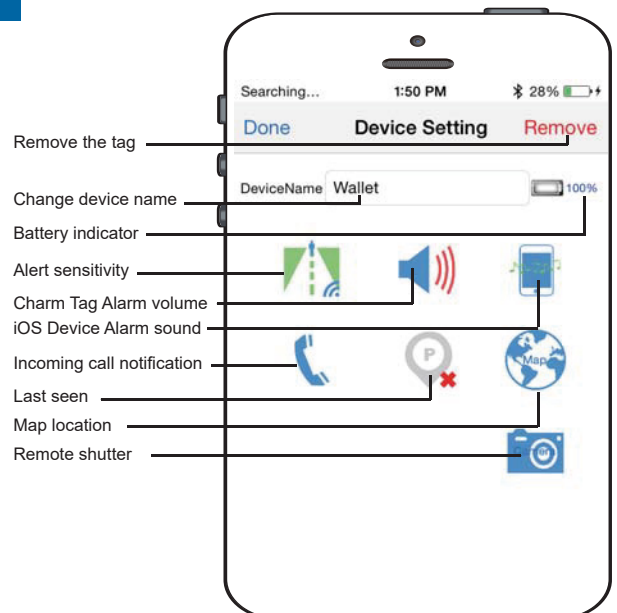
Out of range

5 Main Menu and additional settings and functions



- Enter help menu
- Add a tag
- Find your tag
- Change device icon
- Signal strength
- Device name
- Enter setting menu

6 Device Setting Menu



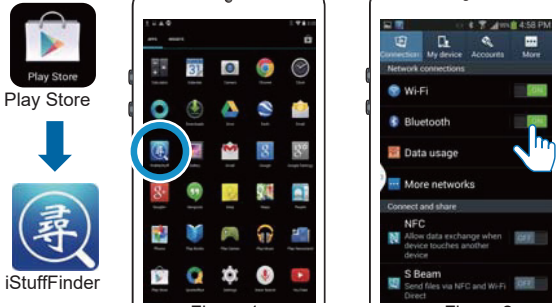
- Remove the tag
- Change device name
- Battery indicator
- Alert sensitivity
- Charm Tag Alarm volume
- iOS Device Alarm sound
- Incoming call notification
- Last seen
- Map location
- Remote shutter

Charm Tag Quick Installation Guide For Android

1 Download App

- On your Android device, download the free **iStuffFinder** App as illustrated in Figure 1 from the **Play Store**.
- Turn on the of your Android device as illustrated in Figure 2

Notice: For stable Android devices, 2 Charm Tags can be detected.



Airplane Mode

Charm Tag is a device used by most people when travelling and can quickly and efficiently be temporarily disabled by simple enabling "Airplane Mode" on your mobile device. At this time, **ALL** connected tags will emit and audible alarm, then enter a "sleep condition" and will stop transmitting. Each tag will only reawaken, when "airplane mode" on your mobile device is disabled.

Please note: On disabling airplane mode, it may take up to 1 minute for each tag to reconnect.

3 Locate your Android device or Charm Tag

To simply test the pairing and to locate your Android device

Press and immediately release the "Find Me" button as illustrated Figure 8. Your android device will emit an audible signal for approximately 5 seconds.

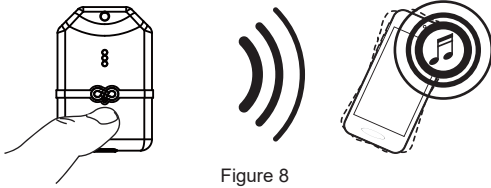


Figure 8

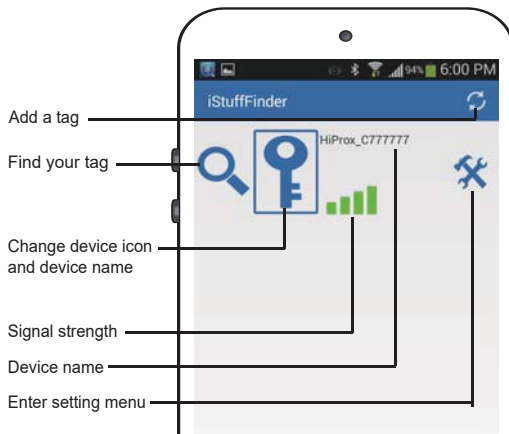
To locate your valuables attached to the Charm Tag

Tap the **Find Me** button (As illustrated Figure 9.) and the Charm Tag will emit a beeping sound and then continue to beep for approximately 5 seconds.



Figure 9

5 Main Menu and additional settings and functions



Please Note:

After software updates to you Smart device, it may be necessary to delete the iStuffFinder App and remove the tags from your connections list. If, after any operating system update the tags work as before then no action is needed, however if you notice a degradation in the performance, we recommend you delete the App, remove the tags from your connections, followed by a general reinstallation as described in the user guide.

2 Install the battery and pairing

Place the battery into **Charm Tag** as illustrated below.

- Remove the top cover with your hand. Force the top cover to slide from its mounted position towards the top of the Charm Tag.(Figure 3 & Figure 4)
- Insert the battery into the battery compartment with the "+" sign on the battery facing up. Then replace the top cover by sliding it down into compartment opening.(Figure 5)
- Once turn "ON" the Charm tag will automatically enter "pairing" mode and the LED will flash GREEN once every second indicating it is searching for your ios device.



Figure 3

Figure 4

Figure 5

- Run iStuffFinder application by tapping the on screen icon.
- Once open tap the **+** button(See figure 6) to discover all available devices. Once discovered tap the **+** button to add each device to the paired list (See figure 7). The device will then enter paired mode (connected) and the LED will flash green once every 5 seconds.

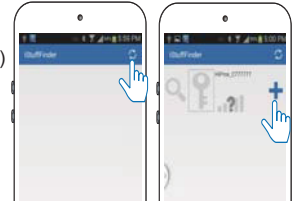


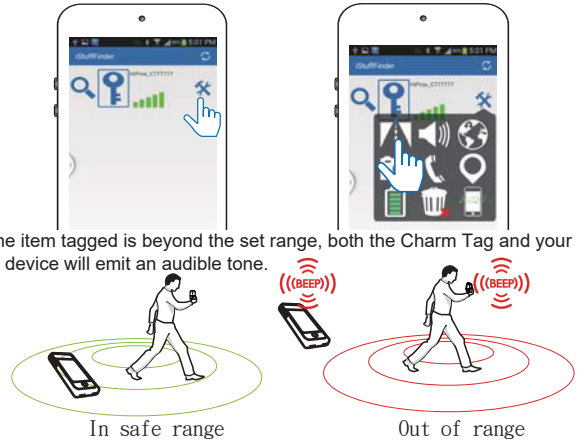
Figure 6

Figure 7

4 Notification alert when your Android and Charm Tag are out of range

Alarm Sensitivity Settings (The default setting is in far or low sensitivity)

To select the distance at which your Android device and Charm Tag are out of range tap the **⚙** icon to the right of each paired device list. On tapping it, the images below **⚙** will appear. **⚙** - Far / low sensitivity, **⚙** - Near / High sensitivity, **⚙** - No proximity / no alarm will sound if Proximity is set to OFF. With this setting should your Android device and tagged item become separated, or out of range your Android device will not set off the alarm.



When the item tagged is beyond the set range, both the Charm Tag and your Android device will emit an audible tone.

6 Device Setting Menu

