

Wallet Reminder Quick Installation Guide For iOS

1 Download App

- On your iOS smartphone running iOS 6 and above, iPad version 3/4 operating iOS 6 and above, iPad mini all versions, operating iOS 6 and above, iPad Air and iPod Touch (version 4 operating iOS 6 and above). Download the free **iStuffFinder** app as illustrated in Figure 1 from the **Apple iTunes store** Apps for iPhone or by searching **iStuffFinder** on **Safari**.
- Enable on your iOS device as illustrated in Figure 2.

Notice: For iOS devices, 4 Wallet Reminders can be detected at once.

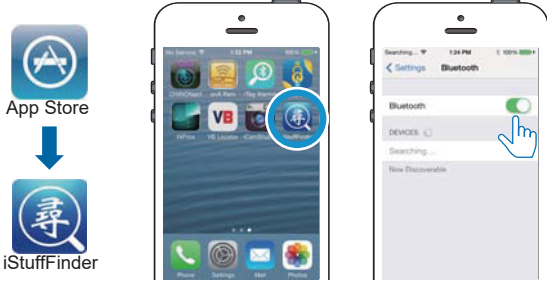


Figure 1

Figure 2

Airplane Mode

WalletTag is a device used by most people when travelling and can quickly and efficiently be temporarily disabled by simply enabling airplane mode on your mobile device. At this time, **ALL** connected tags will enter a "sleep condition" and stop transmitting. Each tag will only reawaken, when "airplane mode" on your mobile device is disabled.

Please note: On disabling airplane mode, it may take up to 1 minute for each tag to reconnect.

2 Install the battery

Place battery into WalletTag as illustrated in Figure 3 below. **IMPORTANT NOTE: BE SURE TO INSERT THE BATTERY BETWEEN THE UPPER AND LOWER CONTACTS WITH the - VE SIDE OF THE BATTERY FACING UP.**

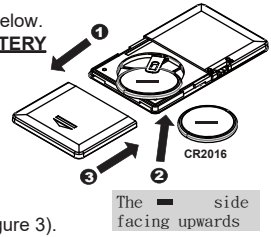


Figure 3

Placing the battery on top of the contact and closing the battery compartment lid may cause damage to the battery terminal and invalidate your warranty.

- Slide the battery cover open as shown in point 1 (Figure 3).
- Insert the battery with the negative sign (-) pointing upwards, as shown in point 2 (Figure 3).
- Replace the battery cover as shown in point 3 (Figure 3).
- Turn "ON" the WalletTag by sliding the recessed Power Switch to the "ON" position as illustrated in Figure 4 below.

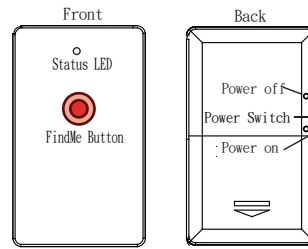


Figure 4



3 Pairing and Locate your iPhone/iPad

- Run the **iStuffFinder** application on your iOS device by tapping the **iStuffFinder** icon, then, tap the search button (See figure 5 below) to discover all available devices (Up to a maximum of four).
- The App will then present you with a Bluetooth pairing request (See figure 6 below) and Select "Pair" for each device (Up to a maximum of four). The device will then enter paired (connected) mode and the green LED will blink once every 5 seconds.



Figure 5

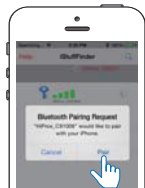


Figure 6

To simply test the paired device and to Locate your iPhone/iPad

Press and immediately release the "Find Me" button as illustrated in Figure 7. Your iOS device will emit an audible signal for approximately 5 seconds.

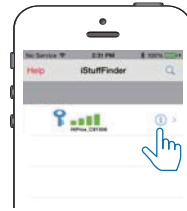


Figure 7

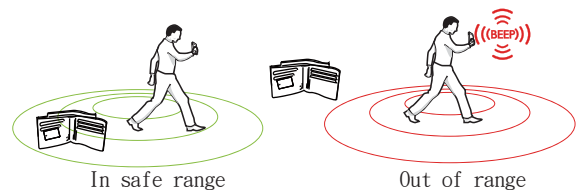
4 Notification alert when your iPhone/iPad and WalletTag are out of range

Alarm Sensitivity Settings

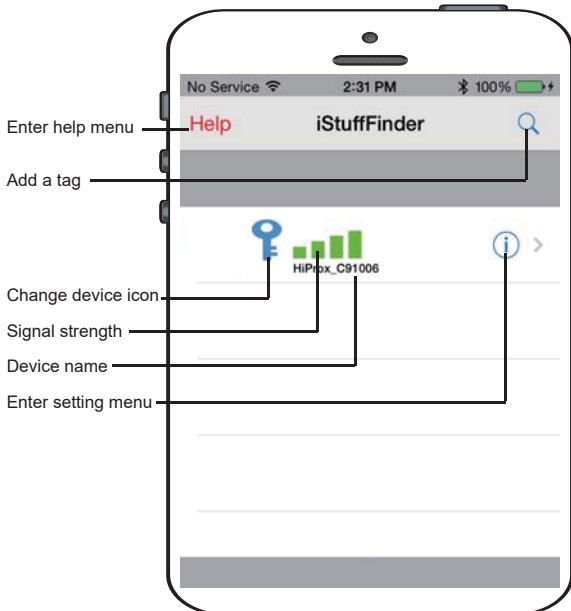
(The default setting is in far or low sensitivity) To select the distance at which your iOS device and WalletTag are out of range tap the icon to the right of each paired device list. On tapping it, the images to the left will appear. Green Far / low sensitivity, Red Near / High sensitivity, Grey Off or no sensitivity.



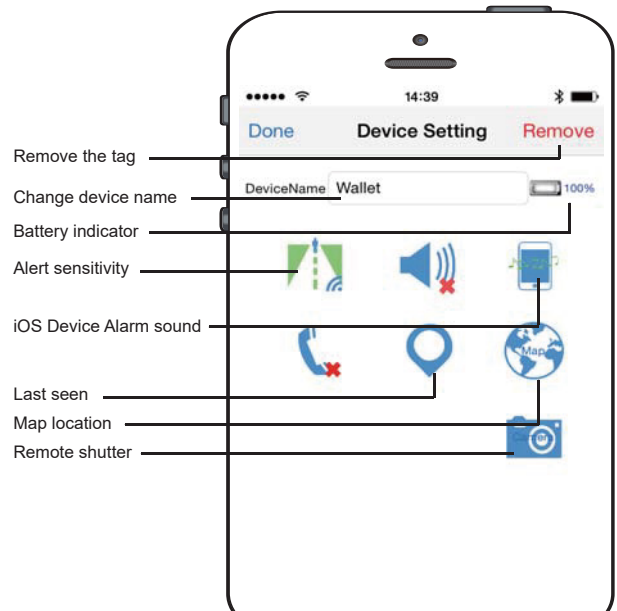
When the item tagged item is beyond the set range, your iOS device will emit an audible tone.



5 Main Menu and additional settings and functions



6 Device Setting Menu

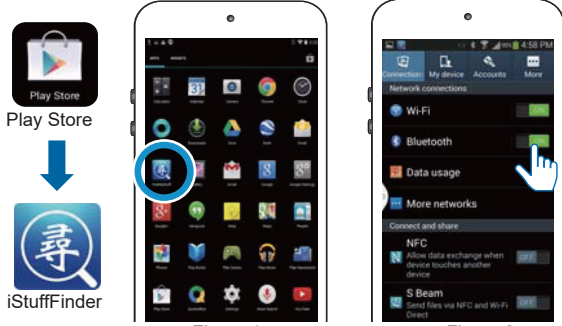


Wallet Reminder Quick Installation Guide For Android

1 Download App

- On your Android device, download the free **iStuffFinder** as illustrated in Figure 1 from **Play Store** or by searching **iStuffFinder** on **Google**.
- Turn on the of your Android device as illustrated in Figure 2

Notice: For stable Android devices, 2 Wallet Reminders can be detected.



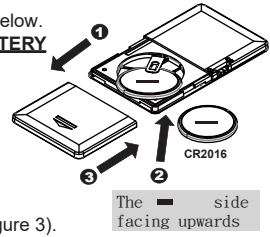
Airplane Mode

WalletTag is a device used by most people when travelling and can quickly and efficiently be temporarily disabled by simple enabling airplane mode" on your mobile device. At this time, **ALL** connected tags will enter a "sleep condition" and stop transmitting. Each tag will only reawaken, when "airplane mode" on your mobile device is disabled.

Please note: On disabling airplane mode, it may take up to 1 minute for each tag to reconnect.

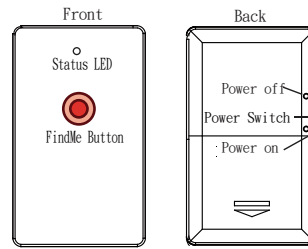
2 Install the battery

Place battery into WalletTag as illustrated in Figure 3 below.
IMPORTANT NOTE: BE SURE TO INSERT THE BATTERY BETWEEN THE UPPER AND LOWER CONTACTS WITH the - VE SIDE OF THE BATTERY FACING UP.



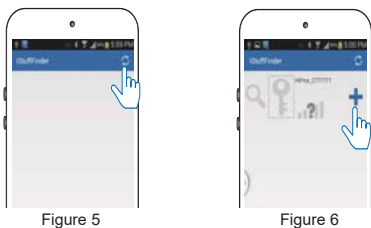
Placing the battery on top of the contact and closing the battery compartment lid may cause damage to the battery terminal and invalidate your warranty.

- Slide the battery cover open as shown in point 1 (Figure 3).
- Insert the battery with the negative sign (-) pointing upwards, as shown in point 2 (Figure 3).
- Replace the battery cover as shown in point 3 (Figure 3).
- Turn "ON" the WalletTag by sliding the recessed Power Switch to the "ON" position as illustrated in Figure 4 below.



3 Pairing and Locate your Android device

- Run iStuffFinder application by tapping the on screen icon.
- Once open tap the **+** button (See figure 5) to discover all available devices (Up to a maximum of two). Once discovered tap the **+** button to add each device to the paired list (See figure 6). The device will then enter paired mode (connected) and the LED will flash GREEN once every 5 seconds.



To simply test the pairing and to locate your Android device

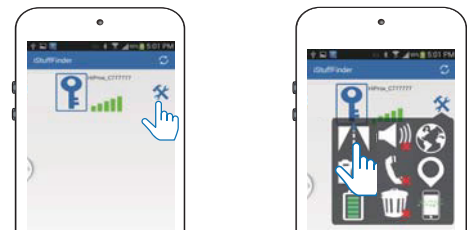
Press and immediately release the "Find Me" button as illustrated in Figure 7. Your android device will emit an audible signal for approximately 5 seconds.



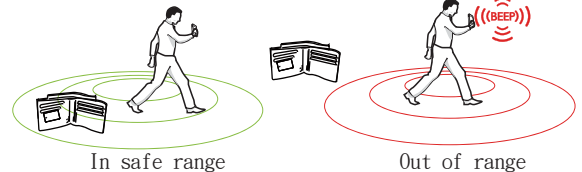
4 Notification alert when your Android device and WalletTag are out of range

Alarm Sensitivity Settings

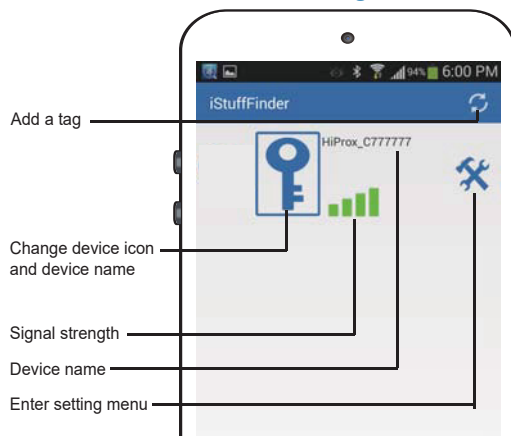
(The default setting is in far or low sensitivity)
To select the distance at which your Android device and Wallet Reminder are out of range tap the **X** icon to the right of each paired device list. On tapping it, the images below will appear. **Far / Low sensitivity**, **Near / High sensitivity**, **No proximity / Off** should your Android device and tagged item become separated, or out of range your Android device will not set off the alarm.



When the item tagged is beyond the set range, your Android device will emit an audible tone.



5 Main Menu and additional settings and functions



Please Note:

After software updates to you Smart device, it may be necessary to delete the iStuffFinder App and remove the tags from your connections list. If, after any operating system update the tags work as before then no action is needed, however if you notice a degradation in the performance, we recommend you delete the App, remove the tags from your connections, followed by a general reinstallation as described in the user guide.

6 Device Setting Menu

