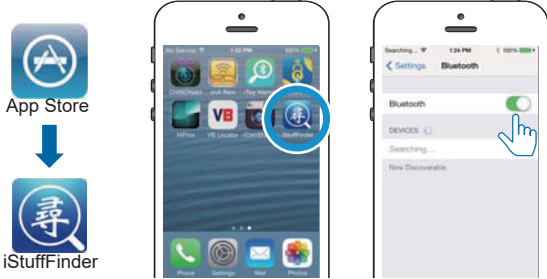


iRemidner Quick Installation Guide For iOS

1 Download App

- On your iOS smartphone running iOS 6 and above, iPad version 3/4 operating iOS 6 and above. iPad mini all versions, operating iOS 6 and above. iPad air and iPod Touch (version 4 operating iOS 6 and above). Download the free **iStuffFinder** App is illustrated in Figure 1 from the **Apple iTunes store** Apps for iPhone or by searching **iStuffFinder** on **Safari**.
- Enable on your iOS device as illustrated in Figure 2.

Notice: For iOS devices, 4 iReminders can be detected at once.



Airplane Mode

iReminder is a device used by most people when travelling and can quickly and efficiently be temporarily disabled by simple enabling airplane Mode" on your mobile device. At this time, **ALL** connected tags will emit an audible alarm, then enter a "sleep condition" and will stop transmitting. Each tag will only awaken, when "airplane mode" on your mobile device is disabled.

Please note: On disabling airplane mode, it may take up to 1 minute for each tag to reconnect.

2 Install the battery and pairing

Place the battery into iReminder as illustrated below.

- Open the battery cover by placing your thumb on the cover (as shown) and pulling it backwards until it clicks open. Then lift off the cover(Figure 3)
- Insert the battery into the battery compartment with the "+" sign on the battery facing up as illustrated in (figure 4 below). Then replace the battery cover by sliding it back to its original location. See (figure 3).
- Turn on the iReminder by sliding the Power Switch to the "ON" position as illustrated in Figure 5 below. Once switched "ON" the tag will automatically enter "pairing" mode and the LED will flash GREEN once every second indicating it is searching for your ios device.



Figure 3



Figure 4



Figure 5

- Run the **iStuffFinder** Application on your iOS device by tapping the **iStuffFinder** icon, then tap the search button **Q**. (See figure 6) to discover all available devices.

- The App will then present you with a pairing request (See figure 7) and Select "Pair" for each device (Up to a maximum of four) The device will then enter paired (connected) mode and the green LED will blink once every 5 seconds.

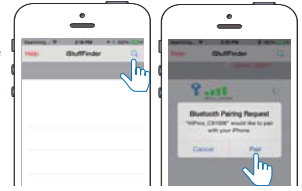


Figure 6

Figure 7

3 Locate your iPhone/iPad or iReminder

To simply test the paired device and to Locate your iPhone/iPad

Press and immediately release the "Find Me" button as illustrated in Figure 8. Your iOS device will emit an audible signal for approximately 5 seconds.



Figure 8

To locate your valuables attached to the iReminder

Tap the **Q** button (as illustrated in Figure 9), the iReminder will emit a beeping sound and then continue to beep for approximately 5 seconds.



Figure 9

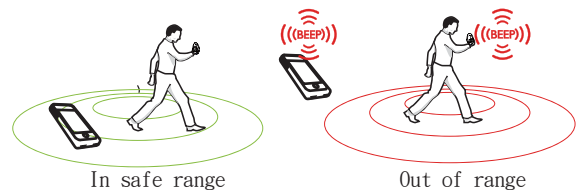
4 Notification alert when your iPhone/iPad and iReminder are out of range

Alarm Sensitivity Settings (The default setting is in far or low sensitivity)

To select the distance at which your iOS device and iReminder are out of range tap the **i** icon to the right of each paired device list. On tapping it, the images to the left will appear. **Green** Far / low sensitivity, **Red** Near / High sensitivity, **Grey** Off or no sensitivity.



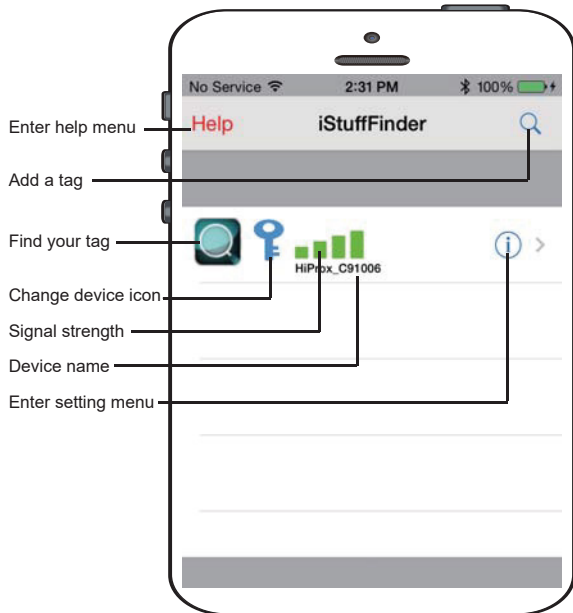
When the item tagged is beyond the set range, both the iReminder and your iOS device will emit an audible tone.



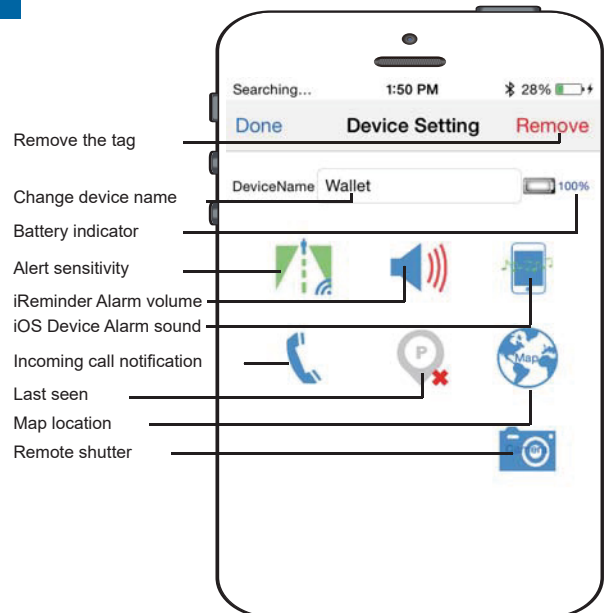
In safe range

Out of range

5 Main Menu and additional settings and functions



6 Device Setting Menu

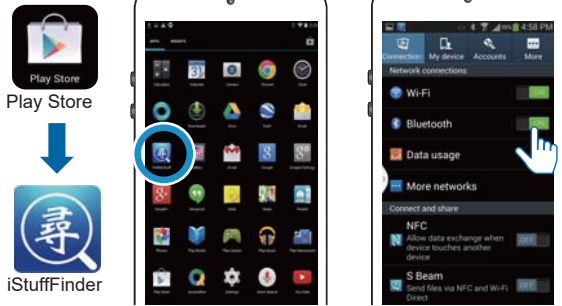


iReminder Quick Installation Guide For Android

1 Download App

- On your Android device, download the free **iStuffFinder** as illustrated in Figure 1 from **Play Store** or by searching **iStuffFinder** on **Google**.
- Turn on the of your Android device as illustrated in Figure 2

Notice: For stable Android devices, 2 iReminders can be detected.



Airplane Mode

iReminder is a device used by most people when travelling and can quickly and efficiently be temporarily disabled by simple enabling airplane Mode™ on your mobile device. At this time, **ALL** connected tags will emit and audible alarm, then enter a “sleep condition” and will stop transmitting. Each tag will only reawaken, when “airplane mode” on your mobile device is disabled.

Please note: On disabling airplane mode, it may take up to 1 minute for each tag to reconnect.

2 Install the battery and pairing

Place the battery into iReminder as illustrated below.

- Open the battery cover by placing your thumb on the cover (as shown) and pulling it backwards until it clicks open. Then lift off the cover (Figure 3)
- Insert the battery into the battery compartment with the “+” sign on the battery facing up as illustrated in (Figure 4 below). Then replace the battery cover by sliding it back to its original location. See (Figure 3).
- Turn on the iReminder by sliding the Power Switch to the “ON” position as illustrated in Figure 5 below. Once switched “ON” the tag will automatically enter “pairing” mode and the LED will flash GREEN once every second indicating it is searching for your Android device.



Figure 3



Figure 4



Figure 5

- Run iStuffFinder application by tapping the on screen icon.
- Once open tap the button (See figure 6) to discover all available devices. Once discovered tap the button to add each device to the paired list (See figure 7). The device will then enter paired mode (connected) and the LED will flash green once every 5 seconds.

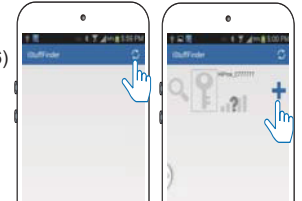


Figure 6

Figure 7

3 Locate your Android device or iReminder

To simply test the pairing and to locate your Android device

Press and immediately release the “Find Me” button as illustrated Figure 8. Your android device will emit an audible signal for approximately 5 seconds.



Figure 8

To locate your valuables attached to the iReminder

Tap the button (As illustrated Figure 9.) and the iReminder will emit a beeping sound and then continue to beep for approximately 5 seconds.

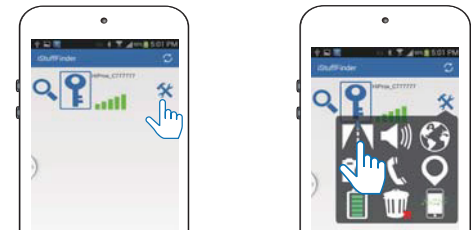


Figure 9

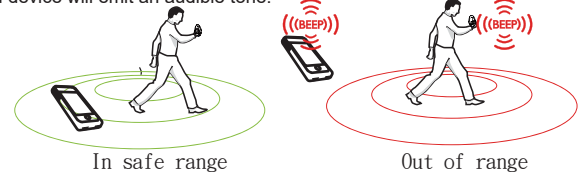
4 Notification alert when your Android and iReminder are out of range

Alarm Sensitivity Settings (The default setting is in far or low sensitivity)

To select the distance at which your Android device and iReminder are out of range tap the icon to the right of each paired device list. On tapping it, the images below will appear. - Far / low sensitivity, - Near / High sensitivity, - No proximity / no alarm will sound if Proximity is set to OFF. With this setting should your Android device and tagged item become separated, or out of range your Android device will not set off the alarm.



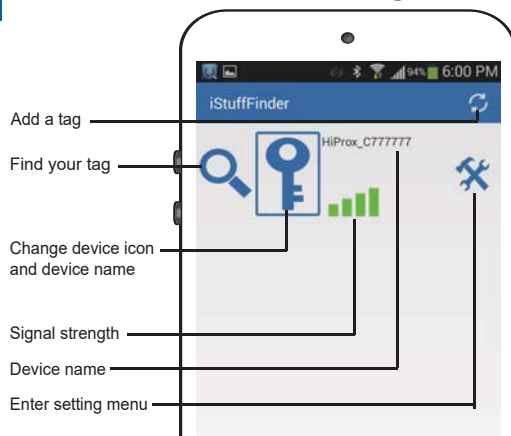
When the item tagged is beyond the set range, both the iReminder and your Android device will emit an audible tone.



In safe range

Out of range

5 Main Menu and additional settings and functions



Please Note:

After software updates to you Smart device, it may be necessary to delete the iStuffFinder App and remove the tags from your connections list. If, after any operating system update the tags work as before then no action is needed, however if you notice a degradation in the performance, we recommend you delete the App, remove the tags from your connections, followed by a general reinstallation as described in the user guide.

6 Device Setting Menu

